

EN

3DS Manager (Software)

Quick Guidances (Instructions)

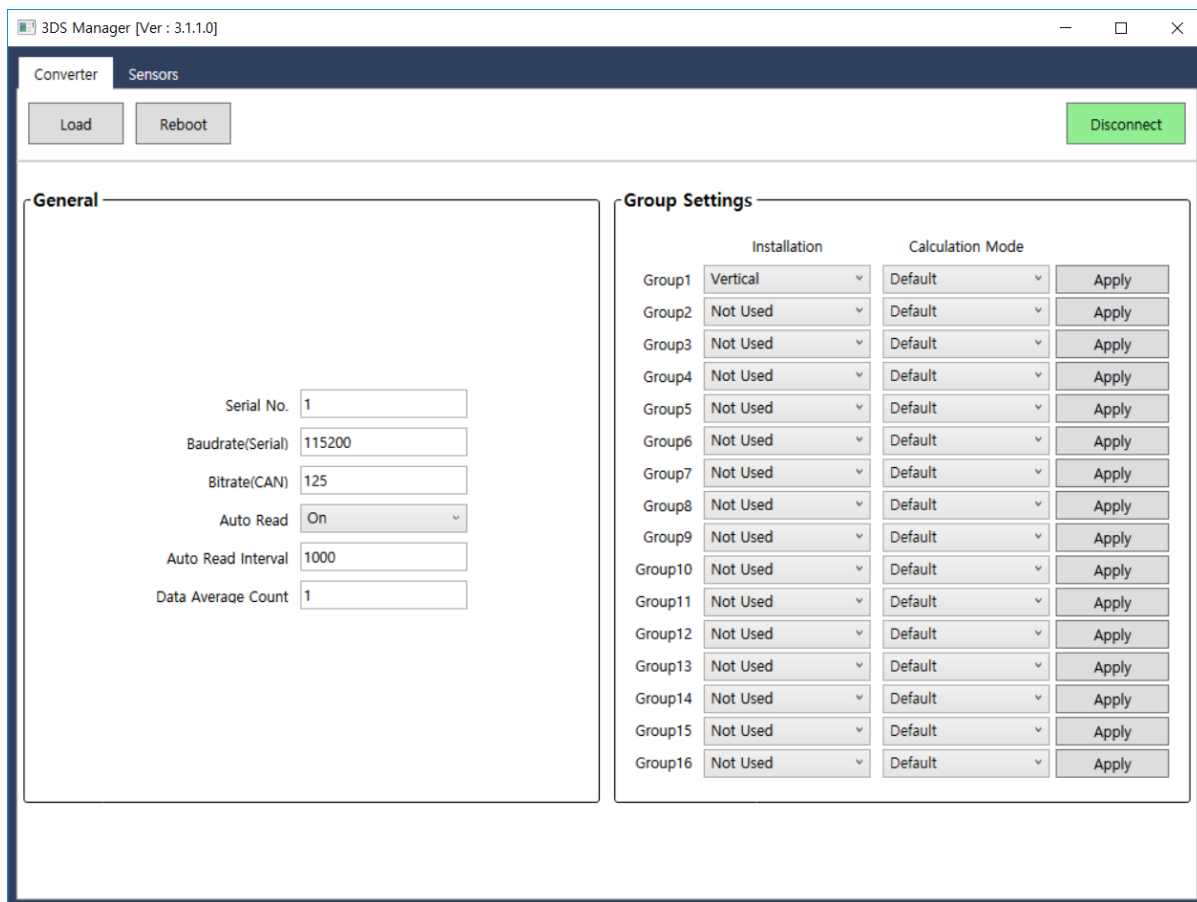
© **DAS**, 2019. All rights reserved.

T +82-31-356-3541 | A 128 Bibong-ro, Bibong-myeon, Hwaseong-si, Gyeonggi-do [18284] ROK
@ das@das-co.com | Web <http://das-co.com>

TABLE OF CONTENTS

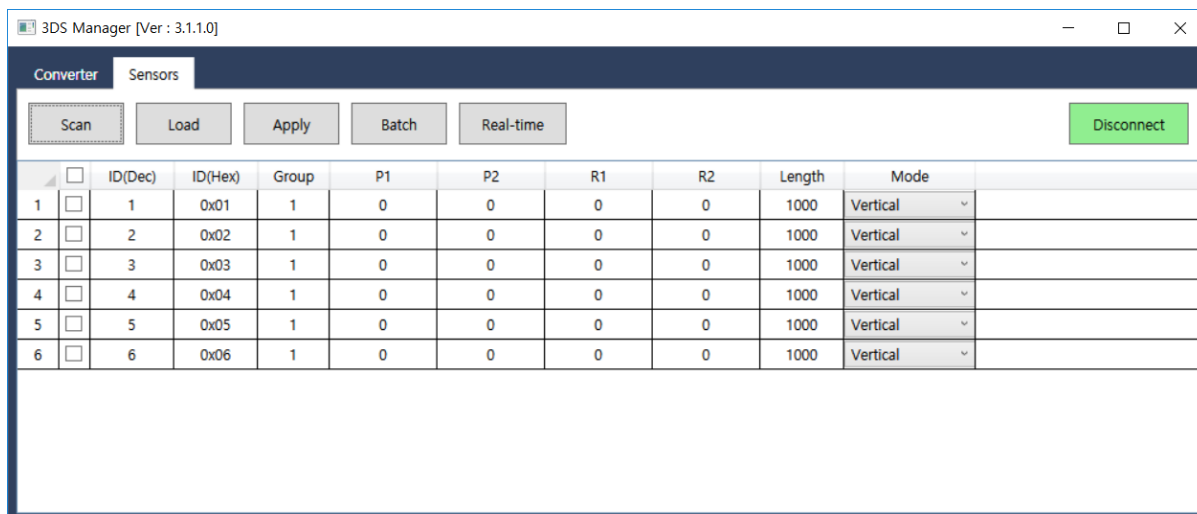
1. Converter Tab	3
2. Sensors Tab	4
3. Batch Modification	4
4. Real-time Monitoring.....	5
5. Quick Guide	6

1. Converter Tab



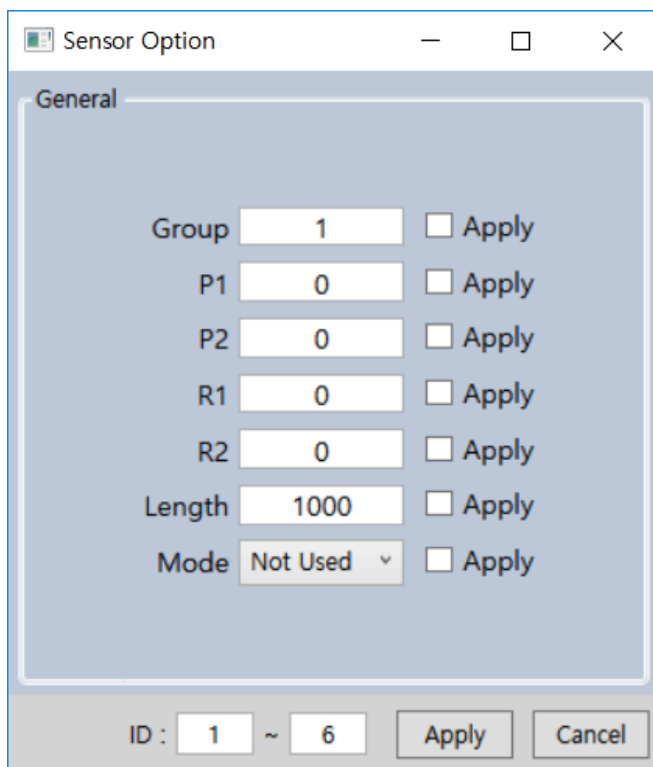
- Click [Load] to load informations from connected 3DS system.
- Click [Reboot] to reboot connected 3DS system.
- Click [Connect] / [Disconnect] to connect or disconnect the 3DS.
- [General] area shows general informations of connected 3DS.
- [Group Settings] area shows individual informations of each groups of 3DS.

2. Sensors Tab



- Click [Scan] to scan connected sensors of 3DS.
- Click [Load] to load informations from connected sensors of 3DS.
- Click [Apply] to done and apply modified informations to sensors.
- Click [Batch] to execute batch modification.
- [Real-time] shows measured data by sensors in real-time.
- Click [Connect] / [Disconnect] to connect or disconnect the 3DS.

3. Batch Modification



- To execute batch modification,
 - Input values for each items.
 - Check 'Apply' on each items to apply.
 - Choose IDs of sensors which will applied.
 - And click [Apply].

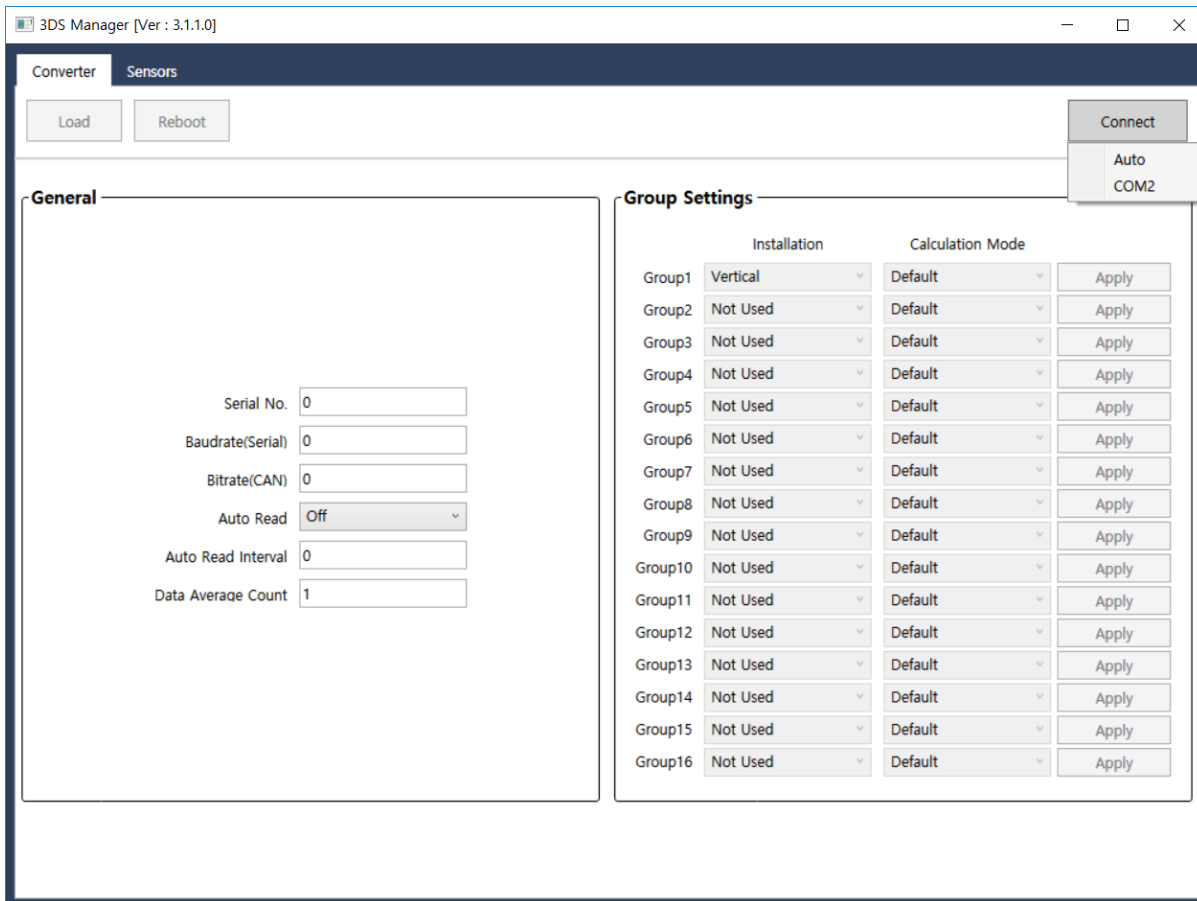
4. Real-time Monitoring

	General		Pitch	Roll
ID	Input Voltage	Temper	Current Angle	Current Angle
1	12.48	25.87	0.036	0.681
2	12.37	25.50	-0.129	0.517
3	12.32	25.62	-0.258	0.668
4	12.31	25.43	-0.139	0.786
5	12.42	25.56	-0.019	0.411
6	12.43	25.62	-1.036	-0.578

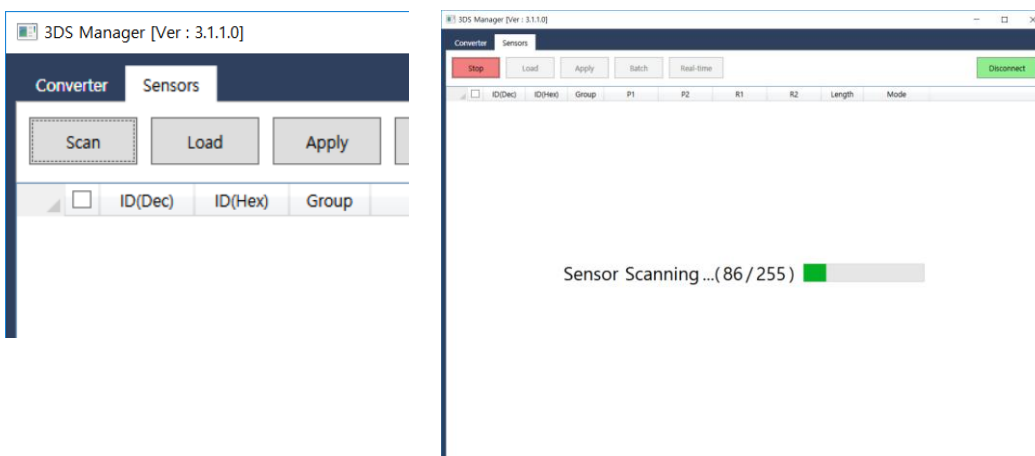
- Interval means the time to refresh shown data from sensors.
- To modify the interval, input value and click [Apply].
- Click [Update Stop] to stop refreshing data.
- Click [Filter On] / [Filter Off] to on and off the filter for measured data.
-

5. Quick Guide

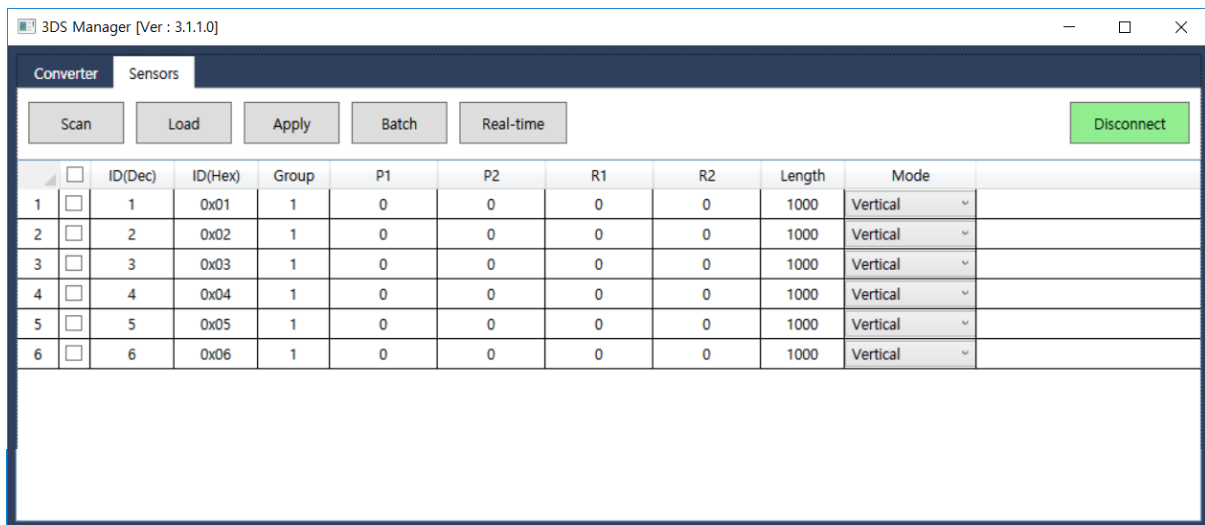
- 1) Click [Connect]
- 2) Select [Auto] or found port.



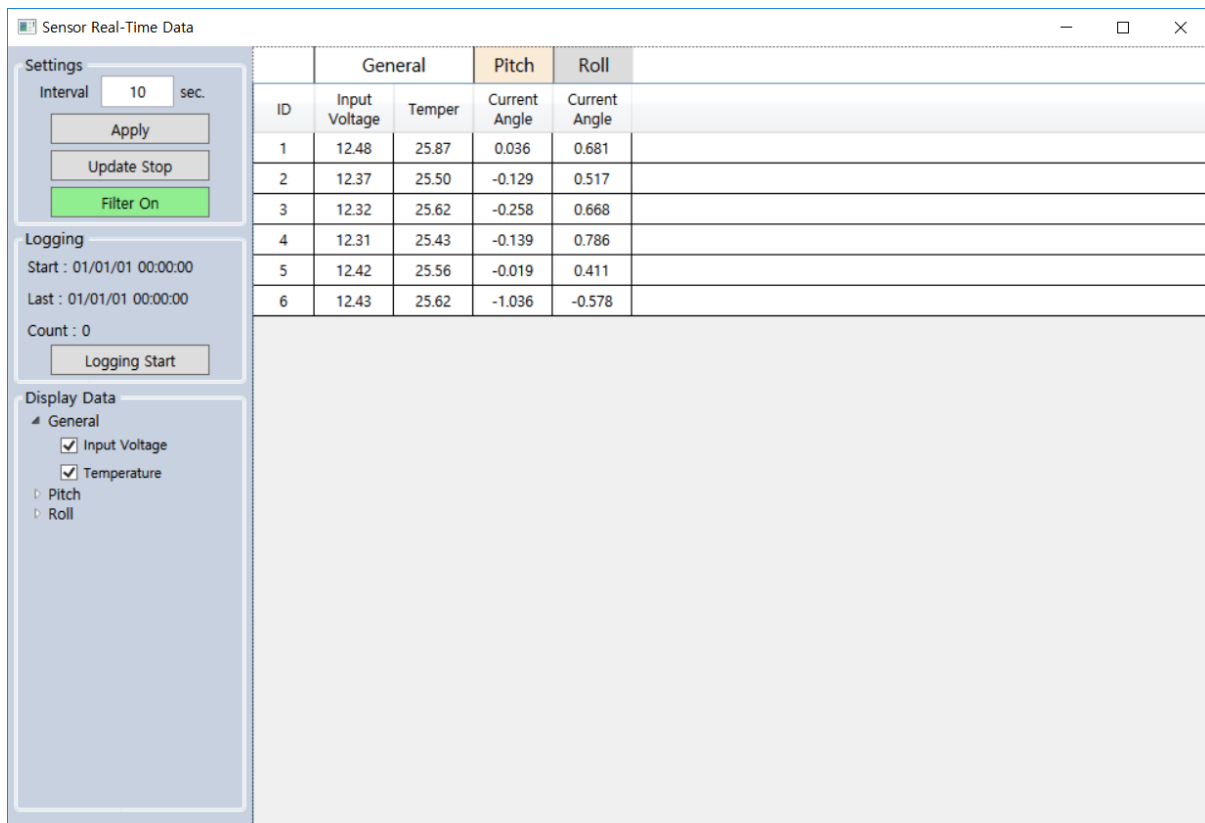
- 3) Once connection succeeded, the button will changed to green.
- 4) Check informations and settings on the screen.
- 5) Go to [Sensors] Tab.
- 6) Click [Scan] to scan sensors.



7) Check the list for scanned sensors.



8) Click [Real-time] to check real-time measured data.



DAS Co., Ltd.

128 Bibong-ro, Bibong-myeon, Hwaseong-si, Gyeonggi-do, 18284 Republic of Korea
 TEL : +82 31) 356-3541 | email : das@das-co.com | Web : <http://das-co.com>